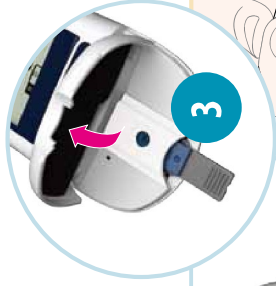


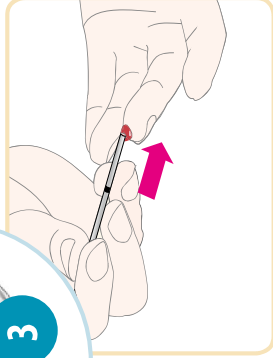
Quick Guide



- Operate the analyzer at the acceptable temperatures
 - For lipid testing 18–32 °C (64–90°F).
 - For glucose testing 10–45 °C (50–113°F)
- Store the analyzer and test strips in a room temperature environment, 2–32 °C (36°F–90°F). Avoid extreme humid or dry conditions.
- DO not use test strips beyond the expiration date printed on the test strip package, this may cause inaccurate results.

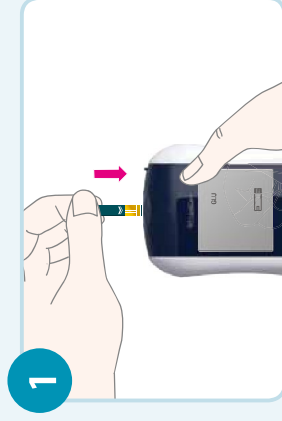


Lipid Test Procedure

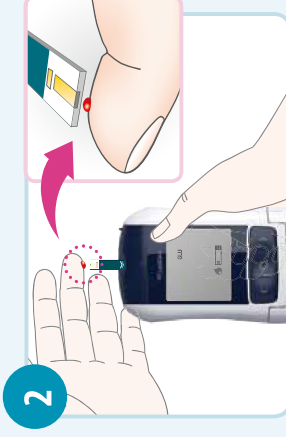


1. Insert the codechip with the code number that matches the code number on the Lipid test strip package or pouch.
2. Insert the lipid test strip until it snaps into the slot.
3. Open the measurement chamber flap after "OPEN" appears on the screen.
4. After pricking the selected site with a lancet, collect the blood by using a pipette or capillary tube and plunger.
Refer to the test strip insert for sample volume and collecting sample steps.
(Single test strip: 10 µl, Lipid Profile and TC: HDL test strip: 35µl)
5. Apply the blood sample at application area of the lipid test strip .
6. Close the measurement chamber flap of the Analyzer.
7. Wait for 3 minutes.
8. The test results will appear on the screen in three minutes.

Glucose Test Procedure



Insert a test strip into glucose strip slot.

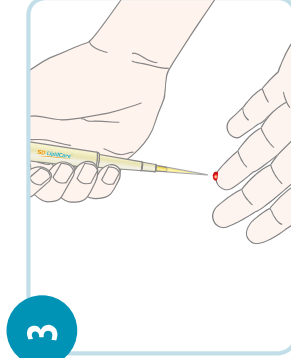
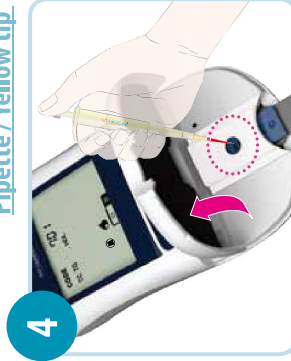


Apply a drop of blood.



The test result will appear on the screen in 5 seconds.

Pipette / Yellow tip

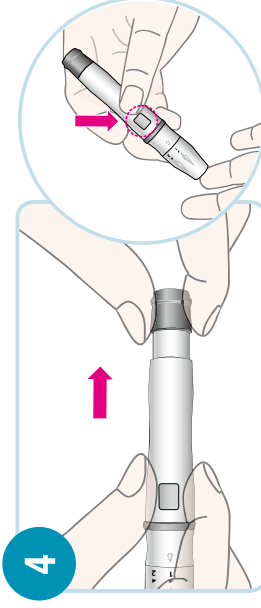
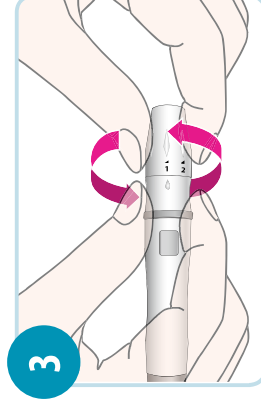
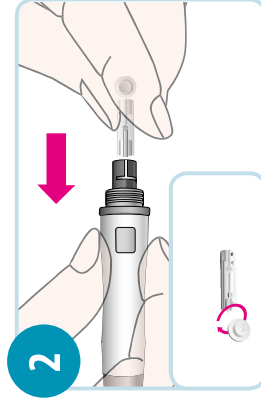
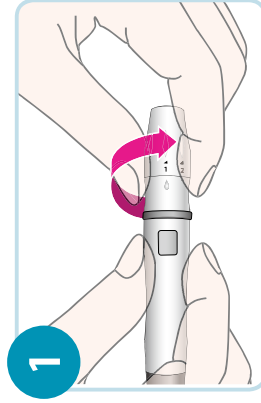


Quick Guide Getting a Drop of Blood

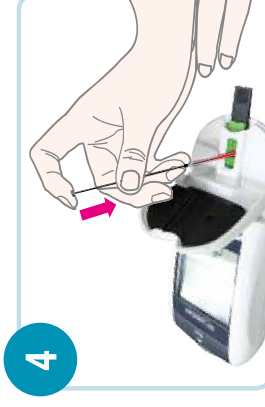
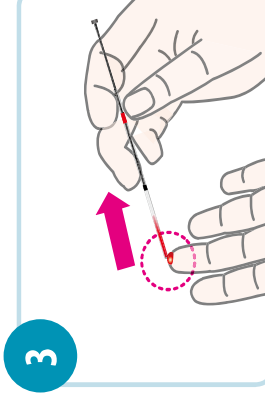
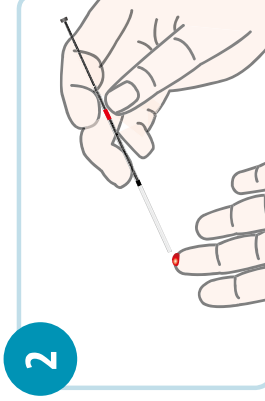
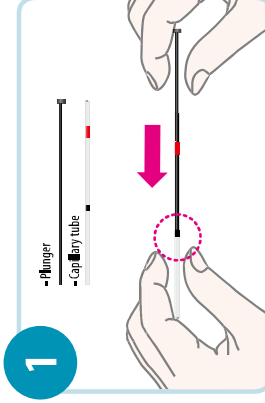


- Before the testing, wash your hands in warm, soapy water and then rinse well and dry completely.
- A lancet should only be used once and not share the used lancets with another person.
- Always close the capillary tube container with the container cap tightly.
- Dispose the used lancets in accordance with the local guideline and in a safe manner, so as not to cause accidental injury.

Using the lancet device.



Using the capillary tube.



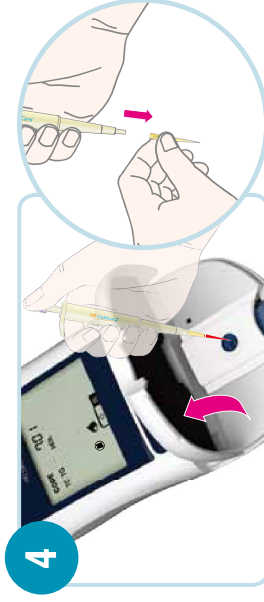
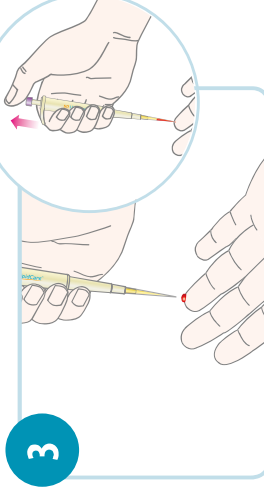
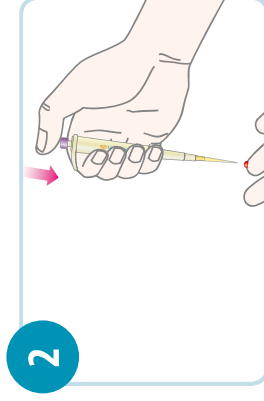
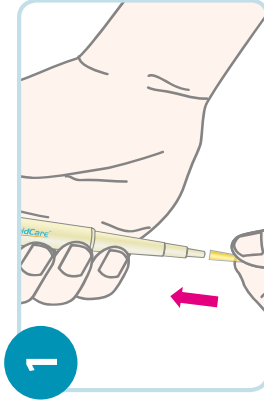
Remove a capillary tube and plunger from the container. Insert the plunger into the capillary tube at the marked red direction.

Touch it to the drop of blood without touching the skin.

The blood fills the tube by capillary action. Do not collect air bubbles.

With the capillary tube filled, apply the sample to the test strip by carefully pressing the plunger down.

Using the pipette.



Place the tip securely on the pipette. Insert.

Push the plunger down and hold it in this position.

Insert the tip into the blood. Slowly release the plunger to draw up the blood sample. Avoid air bubbles.

Open the flap and apply the blood sample. Once applied, dispose of the pipette tip in a biohazard waste container.